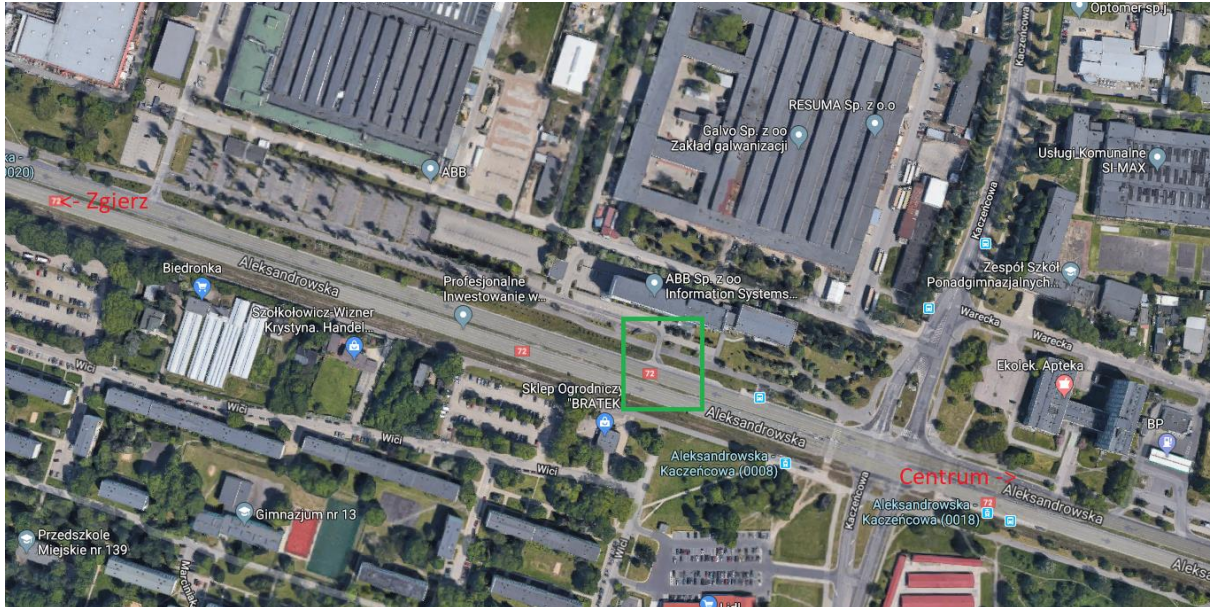
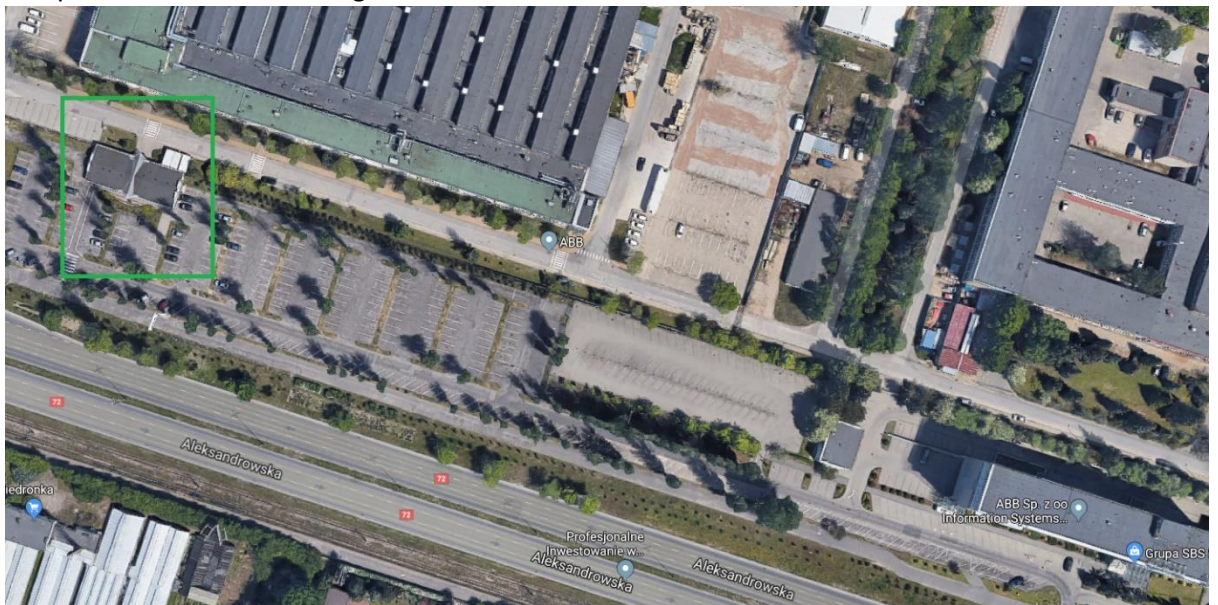


How to get to 2019 Azure Bootcamp in Lodz

- Entrance to the ABB area is from the Aleksandrowska street. Please remember that there is only one correct way, marked on the image:



- The entrance is marked on green. When you traveling from Lodz city centre to Zgierz, it is just after you pass Kaczenkowa street – you will see a big Santander Bank office.
- When you take right turn you need to follow the road to the moment you will see the ABB reception marked on the image:



- There someone from organizers will wait for you and give you the identifiers.
- The 'Eden' conference room is on the first floor and it is quite nice marked (staircase 'A')
- No worry, there will be assistance 😊

You can use free parking spots next to the factory outside of the area, like in the image:

